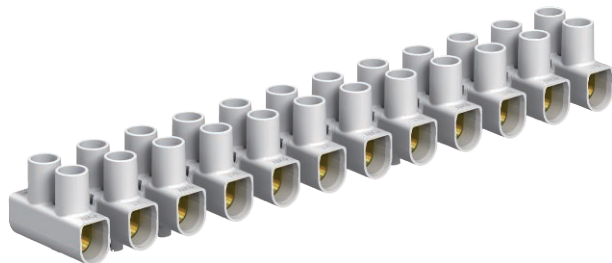


# Technical data sheet

## 6 mm<sup>2</sup> series connectors, polypropylene

Item no. 2056224



Tested according to EN 60998.  
 Steel terminals, steel screws, electrogalvanised, 12-pin, individual terminals detachable from strips using "twist'n'pull".  
 Captive upwards screw.  
 Max. approved ambient temperature to EN 60998: -5 to +80 °C.  
 Nominal cross-section 6 mm<sup>2</sup>  
 Rated voltage 450 V  
 Rated current 41 A  
 Max. connections on each side: 6 mm<sup>2</sup> single-wire or 4 mm<sup>2</sup> fine-wire.

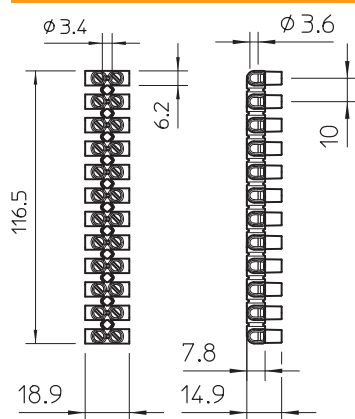


**PP** Polypropylene

### Master data

Item no.	2056224
Type	74 CE WS/EKL 1 S
Description 1	Terminal strip
Dimension	6,0mm <sup>2</sup>
Colour	White
Material	Polypropylene
Material symbol	PP
Smallest sales unit (VG)	10,00 Piece
Weight	2,60 kg/100 pc.

### Technical data



Length	116,50 mm
Width	18,90 mm
Height	14,90 mm
Closing plate required	<input type="checkbox"/>
Connectable conductor cross-section, fine-wire without wire-end ferrule	1,50 - 4,00 mm <sup>2</sup>
Connectable conductor cross-section, single-wire	1,50 - 6,00 mm <sup>2</sup>
Connection position	Side
No. of terminals	12,00
Number of screwless terminals per pole	2,00
Screw tightening torque	0,50 N/m
Version of electrical connection 1	Screw connection
Version of electrical connection 2	Screw connection
Drill hole spacing, centre	10,00 mm
Explosion-tested version	<input type="checkbox"/>
Suitable for flexible conductors	<input checked="" type="checkbox"/>
Suitable for solid conductors	<input checked="" type="checkbox"/>
Suitable for multi-wire conductors	<input checked="" type="checkbox"/>
Mounting type	Direct mounting
Nominal cross section	6,00 mm <sup>2</sup>

# Technical data sheet

6 mm<sup>2</sup> series connectors, polypropylene

Item no. 2056224



## Technical data

Nominal voltage	450,00 V
Nominal current	41,00 A
Pole number	12,00
Cross-section	Max. attachment each side: 6 mm <sup>2</sup> single-wire or 4 mm <sup>2</sup> fine-wire mm <sup>2</sup>
max. permitted ambient temperature	-5,00 - 80,00 °C
Transparent	<input type="checkbox"/>
Ambient temperature	80 °C